

STATE OF FLORIDA  
COUNTY OF PALM BEACH  
THIS PLAT WAS FILED FOR  
RECORD AT \_\_\_\_\_ M.  
THIS \_\_\_\_\_ DAY OF \_\_\_\_\_  
A.D. 201\_\_\_\_ AND DULY RECORDED  
IN PLAT BOOK \_\_\_\_\_ ON  
PAGES \_\_\_\_\_ AND \_\_\_\_\_  
SHARON R. BOCK  
CLERK AND COMPTROLLER

THIS INSTRUMENT PREPARED BY  
DAVID P. LINDLEY  
OF  
**CAULFIELD and WHEELER, INC.**  
SURVEYORS - ENGINEERS - PLANNERS  
7900 GLADES ROAD, SUITE 100  
BOCA RATON, FLORIDA 33434  
OFFICE (561)392-1991 FAX (561)750-1452  
CERTIFICATE OF AUTHORIZATION NO. LB 3591  
JULY - 2017

# CRESTWOOD NORTH

BEING REPLAT OF A PORTION OF TRACT B, PLAT OF SECTION 15, NORTHEAST QUARTER ACCORDING TO THE PLAT THEREOF, AS RECORDED IN PLAT BOOK 107, PAGES 173 AND 174 AND ALL OF TRACTS C AND D, PLAT OF SARATOGA AT ROYAL PALM PLAT I, ACCORDING TO THE PLAT THEREOF AS RECORDED IN PLAT BOOK 61, PAGES 66 THROUGH 74, ALL OF THE PUBLIC RECORDS OF PALM BEACH COUNTY, FLORIDA, LYING IN SECTION 15, TOWNSHIP 43 SOUTH, RANGE 41 EAST, VILLAGE OF ROYAL PALM BEACH, PALM BEACH COUNTY, FLORIDA

UNPLATTED

VILLAGE OF ROYAL PALM BEACH CORPORATE LIMIT  
NORTH LINE OF SECTION 15, NORTHEAST QUARTER  
(PLAT BOOK 107, PAGES 173-174)  
BEARING BASIS

2638.50' (TOTAL)

PLAT LIMIT

TRACT OS-13  
M-1 CANAL INDIAN TRAIL WATER CONTROL DISTRICT  
200' EASEMENT AGREEMENT  
(O.R.B. 1694, PAGE 1753)  
576,012 SF

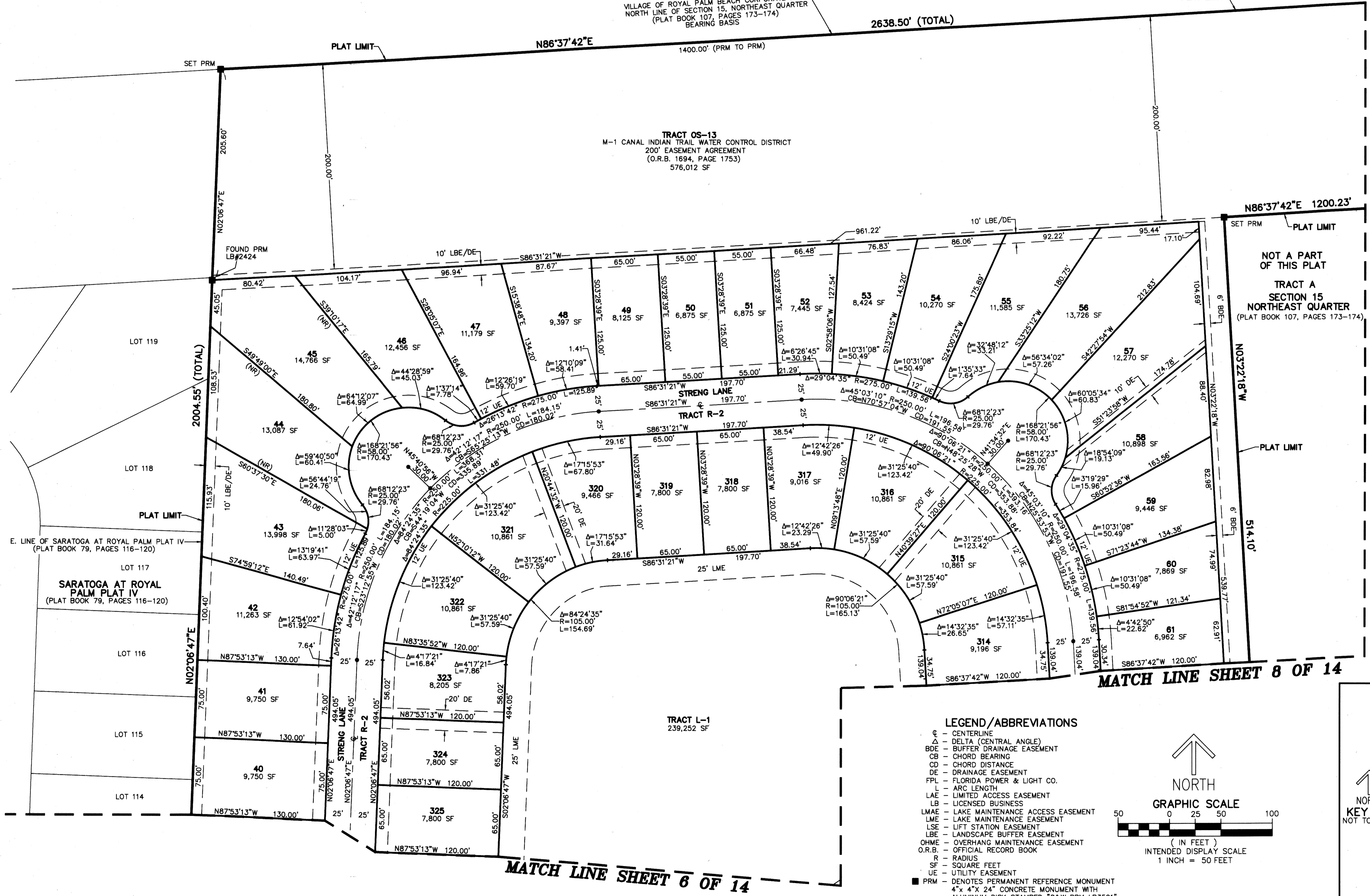
N86°37'42"E 1200.23'

NOT A PART  
OF THIS PLAT  
TRACT A  
SECTION 15  
NORTHEAST QUARTER  
(PLAT BOOK 107, PAGES 173-174)

MATCH LINE SHEET 14 OF 14

MATCH LINE SHEET 8 OF 14

MATCH LINE SHEET 6 OF 14



### LEGEND/ABBREVIATIONS

- ⊙ - CENTERLINE
- Δ - DELTA (CENTRAL ANGLE)
- BDE - BUFFER DRAINAGE EASEMENT
- CB - CHORD BEARING
- CD - CHORD DISTANCE
- DE - DRAINAGE EASEMENT
- FPL - FLORIDA POWER & LIGHT CO.
- L - ARC LENGTH
- LAE - LIMITED ACCESS EASEMENT
- LB - LICENSED BUSINESS
- LMAE - LAKE MAINTENANCE ACCESS EASEMENT
- LME - LAKE MAINTENANCE EASEMENT
- LSE - LIFT STATION EASEMENT
- LBE - LANDSCAPE BUFFER EASEMENT
- OHME - OVERHANG MAINTENANCE EASEMENT
- O.R.B. - OFFICIAL RECORD BOOK
- R - RADIUS
- SF - SQUARE FEET
- UE - UTILITY EASEMENT
- PRM - DENOTES PERMANENT REFERENCE MONUMENT  
4" x 4" x 24" CONCRETE MONUMENT WITH  
ALUMINUM DISK STAMPED "C&W PRM LB3591"
- PCP - DENOTES PERMANENT CONTROL POINT
- OHME - OVERHANG MAINTENANCE EASEMENT  
INDICATES "ZERO" SIDE OF LOT LINE
- PBCUE - PALM BEACH COUNTY UTILITY EASEMENT
- (NR) - NON RADIAL LINE

